

Cornell University

# Fall 2011 Enrollment Report\*

Catherine J Alvord and Marin E Clarkberg  
Institutional Research and Planning  
440 Day Hall • Ithaca, NY 14853-2801

## Contents

---

A. Total Undergraduate Enrollment .....	1
B. First-Time, Full-Time First Year Undergraduates.....	5
C. External Undergraduate Transfers .....	10
D. Total Graduate/Professional Enrollment .....	12
E. First-Time, Post-Baccalaureate Enrollment .....	16

---

\* Throughout this report the following abbreviations apply:

AG: Agriculture & Life Sciences  
AR: Architecture, Arts & Planning  
AS: Arts & Sciences  
EN: Engineering  
GM: Johnson Graduate School of Management [MBA degree program]  
GR: Graduate School  
HA: Hotel Administration  
HE: Human Ecology  
IL: Industrial & Labor Relations  
LA: Law School [JD and LLM degree programs]  
VM: Veterinary Medicine [DVM degree program]  
PR: Professional Schools combined [GM,LA,VM]

## A. Total Undergraduate Enrollment

### Observations

- At 14,167, Fall 2011 undergraduate enrollment was up 3.7% since Fall 2008 -- an all-time high (see Figure A.1)
- Three colleges have decreased total enrollments over the last decade, while others are at their highest enrollment (see Figure A.2):
  - Human Ecology (down 216 students since 2001)
  - Arts & Sciences (down 98 students since 2001)
  - Engineering (increased 51 students since 2010)
  - Agriculture & Life Sciences (increased 44 students since 2010)
- Under-represented minority (in this report, URMs are African-American, Hawaiian/Pacific Islander, Hispanic, Native American) enrollment for Fall 2011 is 2,429, or 17.1% of undergraduate enrollment (see Figure A.3).
- Over the last two decades, Hispanic enrollment has increased more rapidly than African-American enrollment (see Figure A.4). However, new federal ethnicity/race categories adopted in Fall 2010 have a dramatic impact on the Hispanic ethnic category. That is, any student that is a U.S. citizen or permanent resident indicating a Latino/Hispanic ethnicity are now included in the Hispanic ethnicity category regardless of race. This change increases the Hispanic counts and decreases the “Mixed URM” count.
- While total undergraduate enrollment is 49.9% female, the percentage of women in the undergraduate student body varies substantially by college (see Figure A.5)

**Figure A.1. Fall Undergraduate Enrollment, Fall 1980 – Fall 2011**

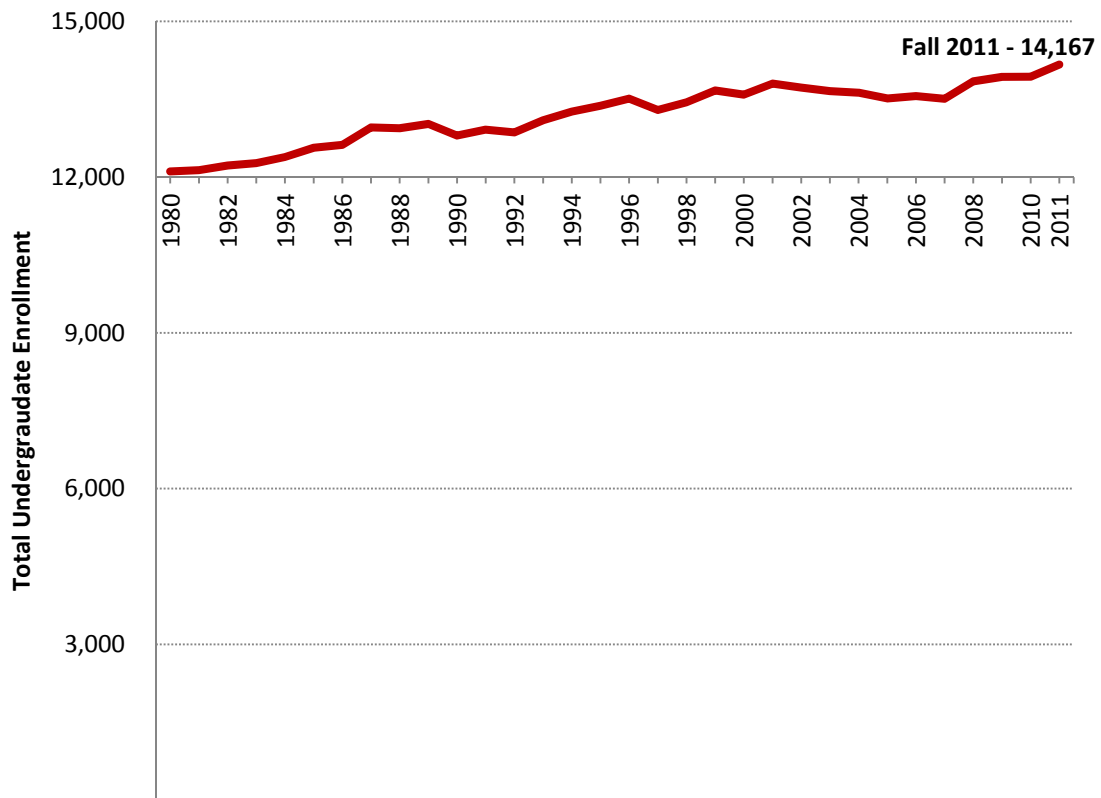
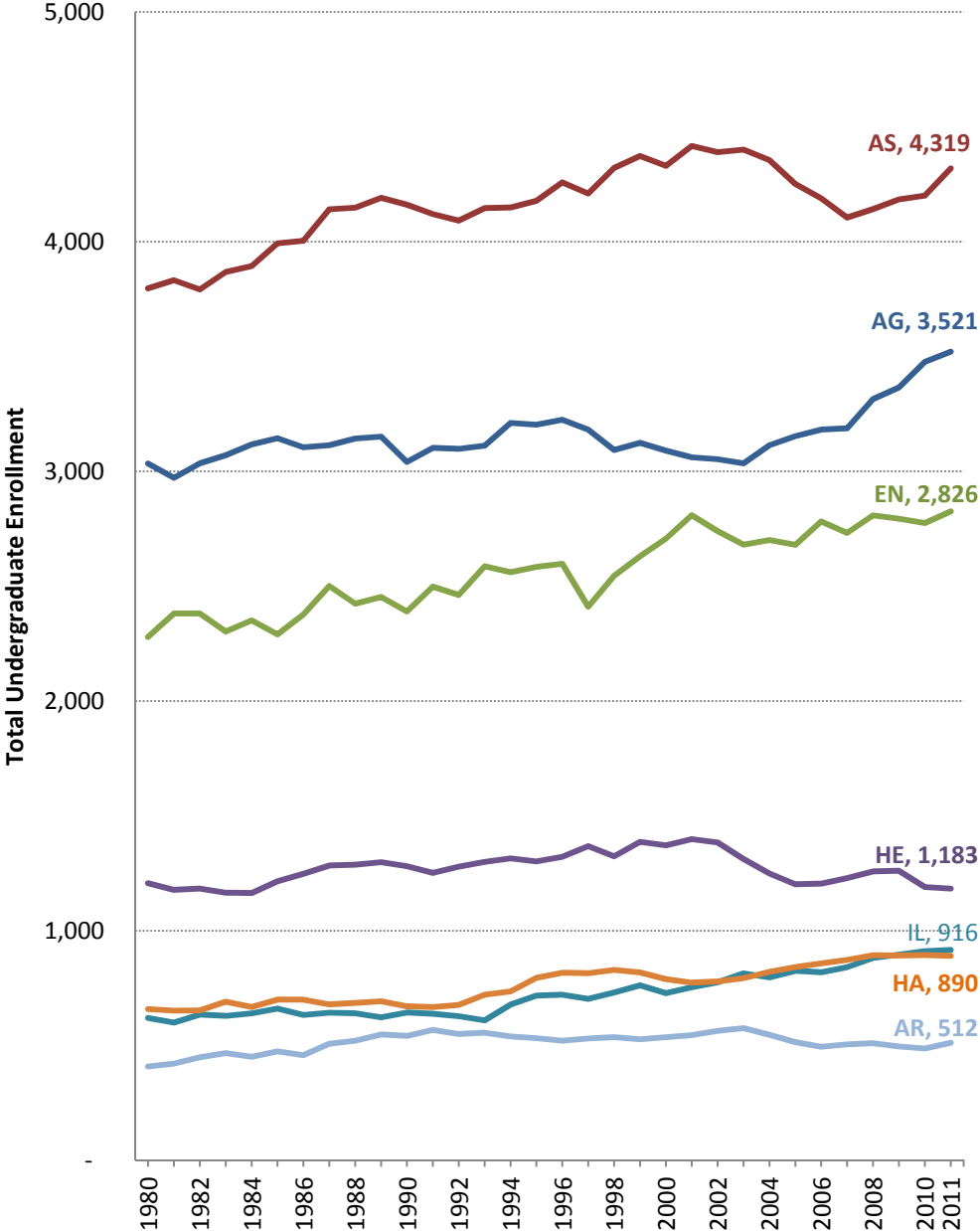
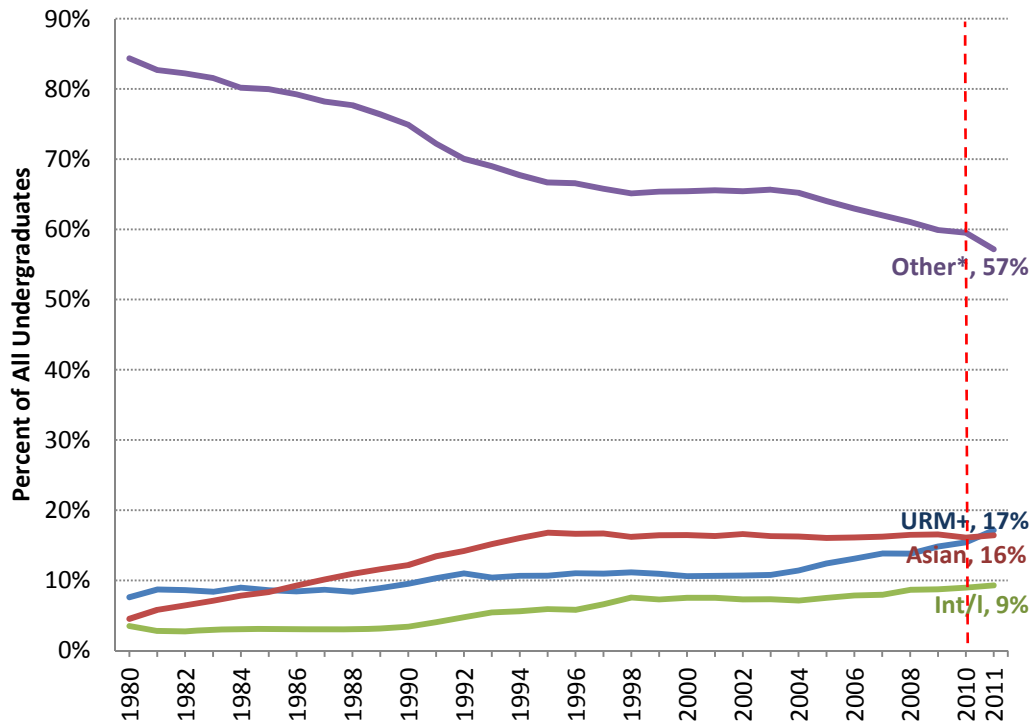


Figure A.2. Undergraduate Enrollment, Fall 1980–Fall 2011, by College



**Figure A.3. Percent of Enrolled Undergraduates by Citizenship/Ethnicity/Race, Fall 1980–Fall 2011**

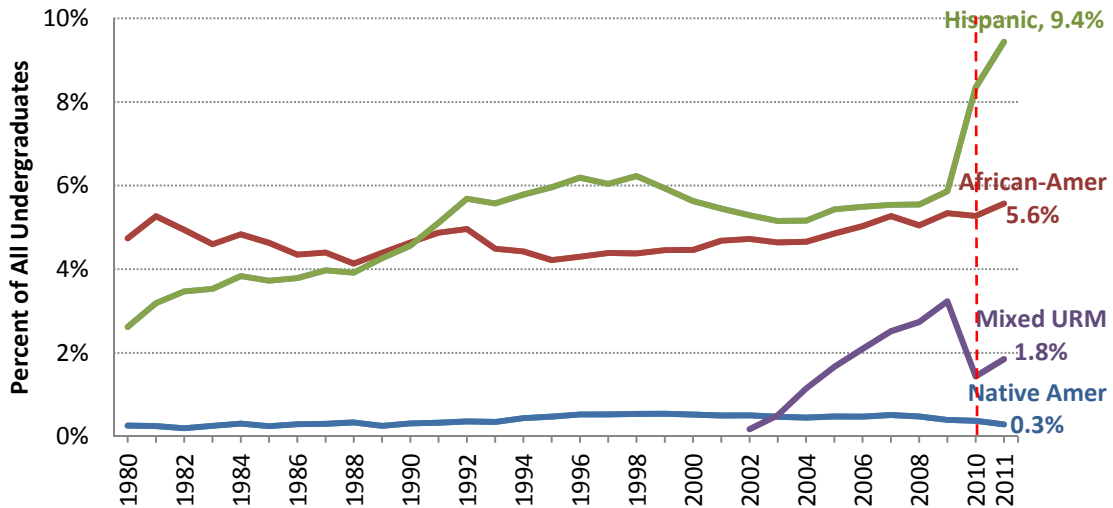


Note: Red dashed line marks adoption of new ethnicity/race collection and reporting practices.

\* Category includes White, mixed race non-URM, and unknown race

† Category includes African-American, Hispanic, Native American and, since 2002, mixed URM race identities

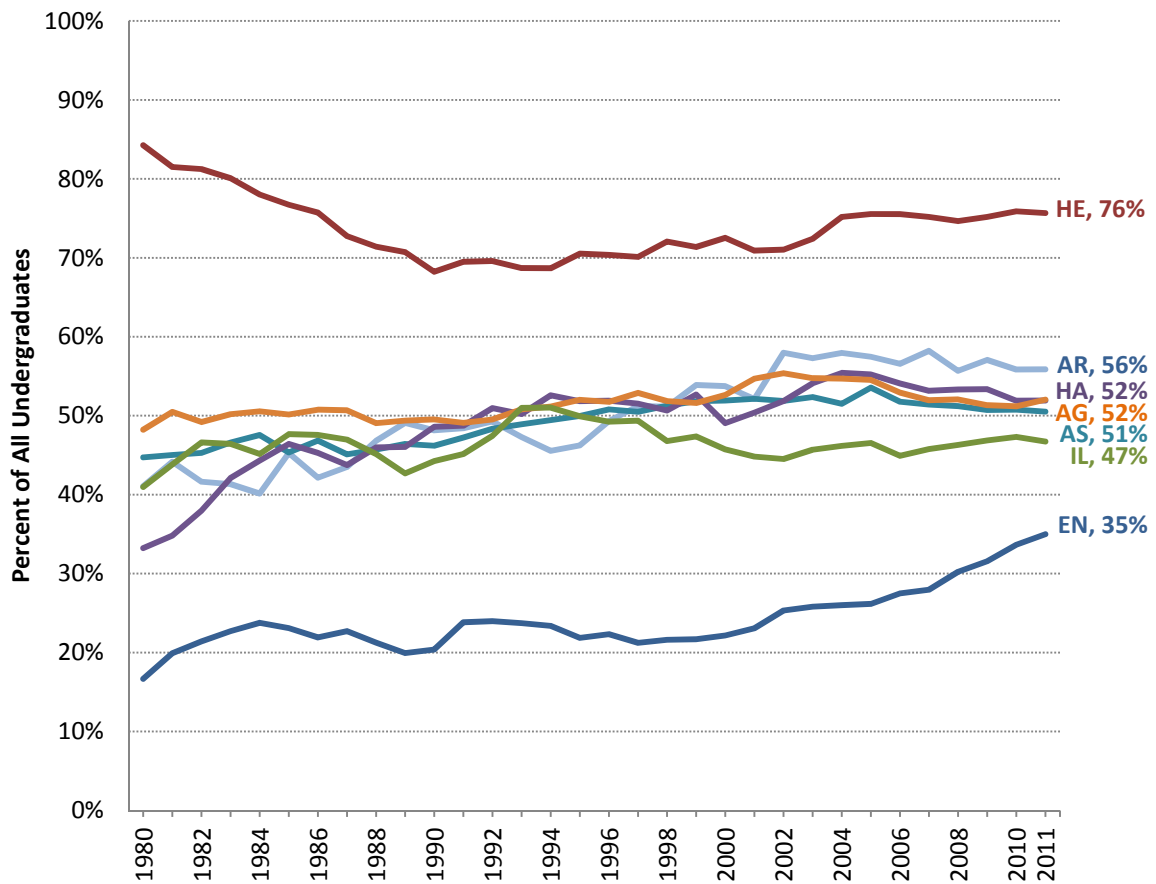
**Figure A.4. Percent of Enrolled Undergraduates that are Hispanic, African-American, Native American, or Other URM, Fall 1980–Fall 2011**



Note: Red dashed line marks adoption of new ethnicity/race collection and reporting practices.

Mixed URM includes Hawaiian/Pacific Islander plus those declaring 2 or more URM categories, excluding Hispanic starting in Fall 2010.

Figure A.5. Percent of Enrolled Undergraduates that are Women, Fall 1980–Fall 2011, by College



## B. First-Time, Full-Time First Year Undergraduates

### Observations

- Enrollment Targets
  - Strategic First-Year Freshman Enrollment Plan of 2001
    - Sought to increase discipline over enrollment management, especially in light of the North Campus Residential Initiative.
    - Established enrollment target of 3,000 fall first-time freshman.
  - When January admissions were suspended in Fall 2003, target for first-time freshman was revised to 3,050.
  - In Fall 2009, enrollment target increased to 3,150.
  - In 2010, the practice of excluding “alternate college” admits in enrollment targets was abandoned, and enrollment target was restated as 3,182.
- Largest freshman class ever was fall 2011 with 3,307 first-time freshmen (Figure B.1)
- Arts & Science freshman enrollment increased 87 students between Fall 2010 and Fall 2011 (see Figure B.2)
- The percentage of new students that are under-represented minorities (URM) increased from 18.3% in Fall 2010 to 20.0% in Fall 2011 (see Figure B.3)
- New federal ethnicity/race guidelines for U.S. citizens and permanent residents implemented Fall 2010 show all students declaring the ethnicity of Hispanic/Latino defaulting to the Hispanic ethnicity regardless of any other race identified. This new guideline increases the Hispanic ethnicity while decreasing the “Mixed URM” race category (see Figure B.4)
- African-American student matriculation increased from 5.3% in Fall 2010 to 6.3% in Fall 2011 (see Figure B.4).
- The first-year classes of Human Ecology are clearly majority female, 72.8% women in Fall 2011. Engineering’s first year students were 36.1% female, an increase from 26.8% female one decade earlier (see Figure B.5).
- At 38.9% in Fall 2006, the percentage of freshmen admitted through Early Decision was a record high (see Figure B.6). The next highest percent was 37.1% in 2009.
- The percent of first-time first year undergraduates receiving financial aid remained stable between Fall 2010 (51.4%) and Fall 2011(52.5%) (see Figure B.7).

**Figure B.1. First-Time, Full-Time First Year Undergraduate Enrollment, Fall 1988–Fall 2011**

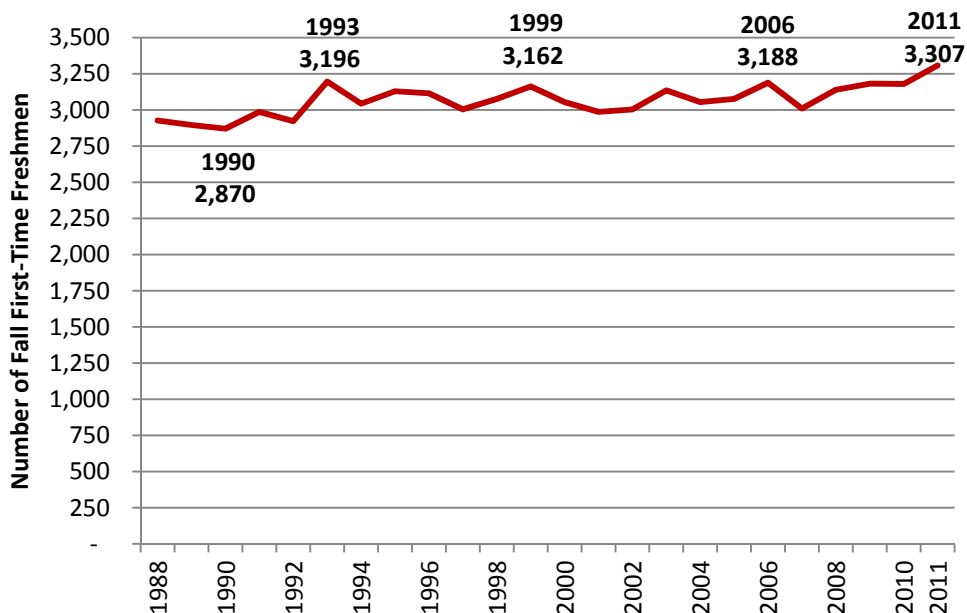
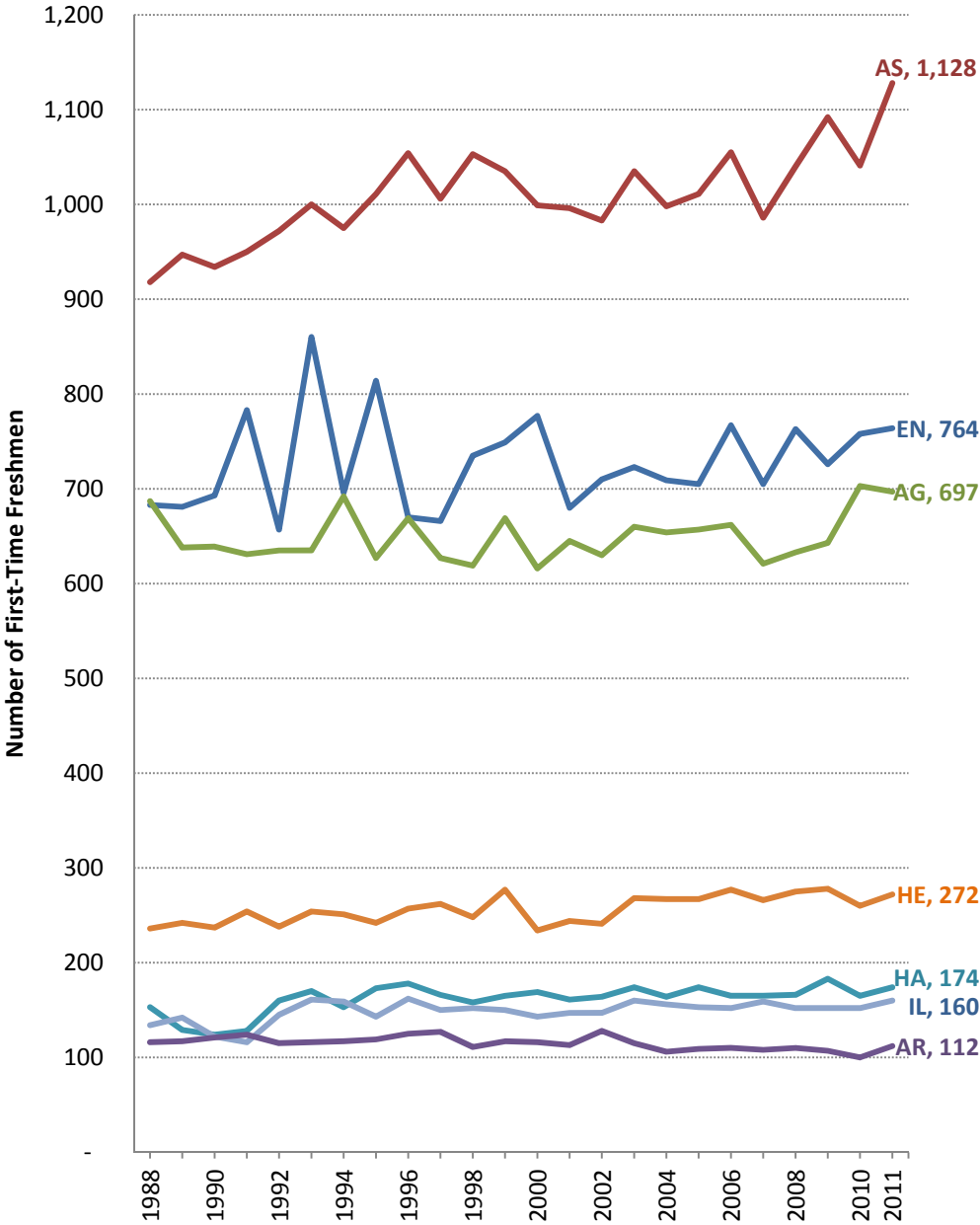
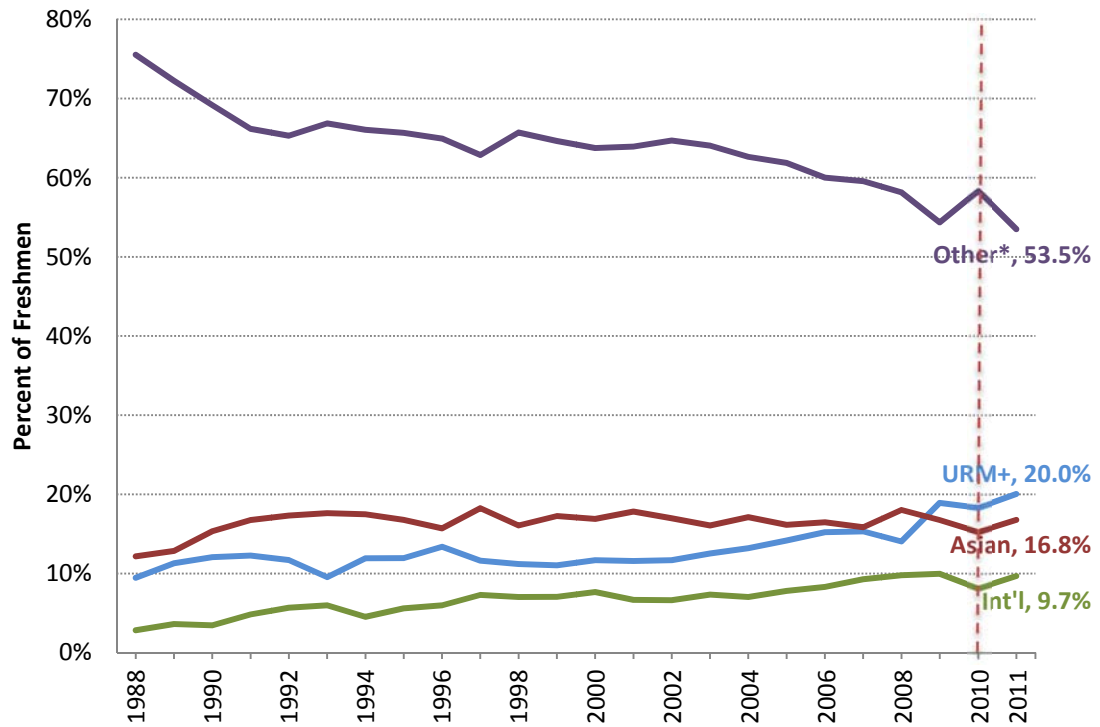


Figure B.2. First-Time, Full-Time First Year Undergraduates, Fall 1988–Fall 2011, By College



**Figure B.3. First-Time, Full-Time First Year Undergraduates by Race/Ethnicity/Citizenship, Fall 1988–Fall 2011**

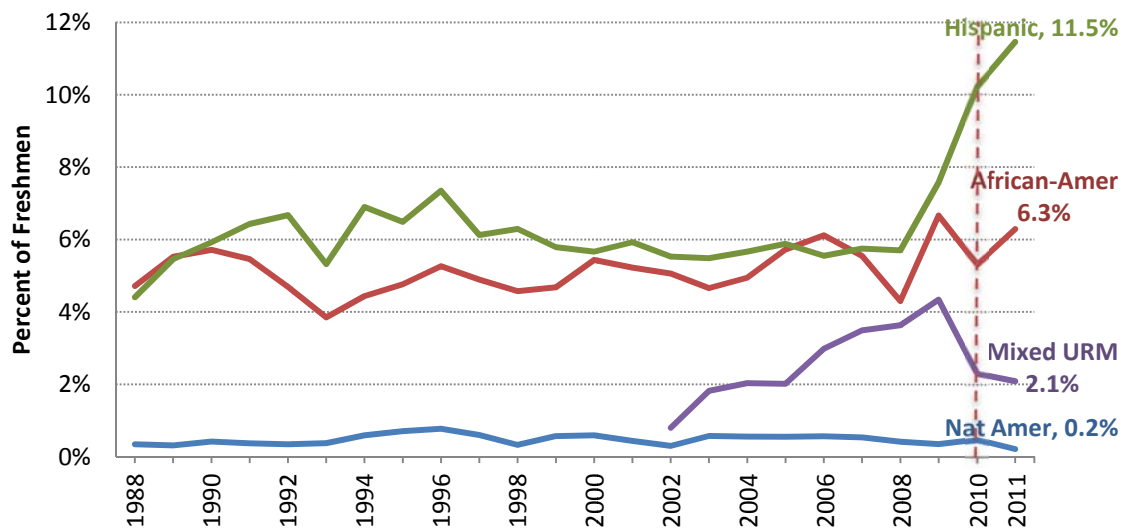


Note: Red dashed line marks adoption of new ethnicity/race collection and reporting practices.

\* Other category includes White, mixed race non-URM, and unknown race [all non-Hispanic].

† URM category includes African-American, Hispanic, Native American, mixed URM race identities, and starting 2010 Hawaiian/Pacific Islander

**Figure B.4. Percent of First-Time, Full-Time First Year Undergraduates that are Hispanic, African-American, Native American, or Other URM, Fall 1988–Fall 2011**



Note: Red dashed line marks adoption of new ethnicity/race collection and reporting practices.

Mixed URM includes Hawaiian/Pacific Islander plus those declaring 2 or more URM categories, excluding Hispanic starting in Fall 2010.



Figure B.5. Percent of First-Time Freshmen that are Women, Fall 1980–Fall 2011

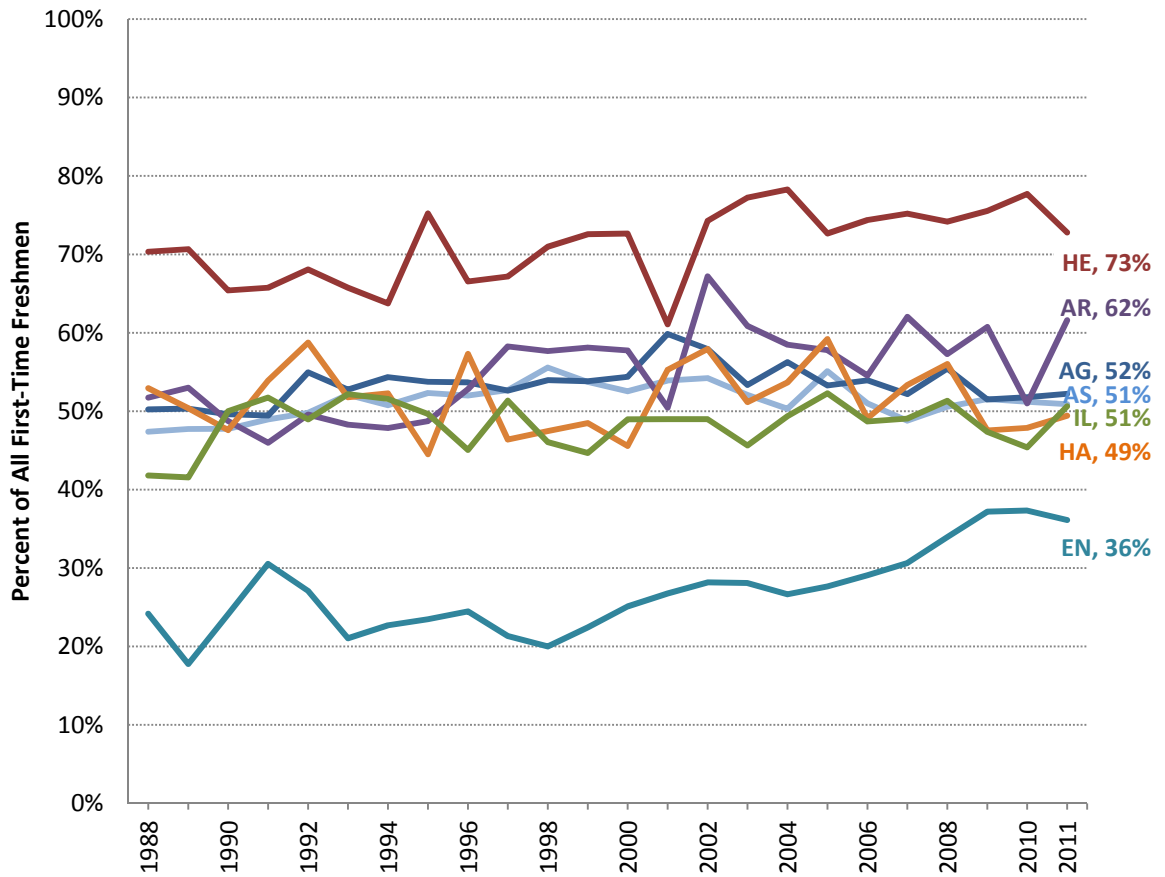


Figure B.6. Percent of First-Time Freshmen Entering in Fall through Early Decision, Fall 1992–Fall 2011

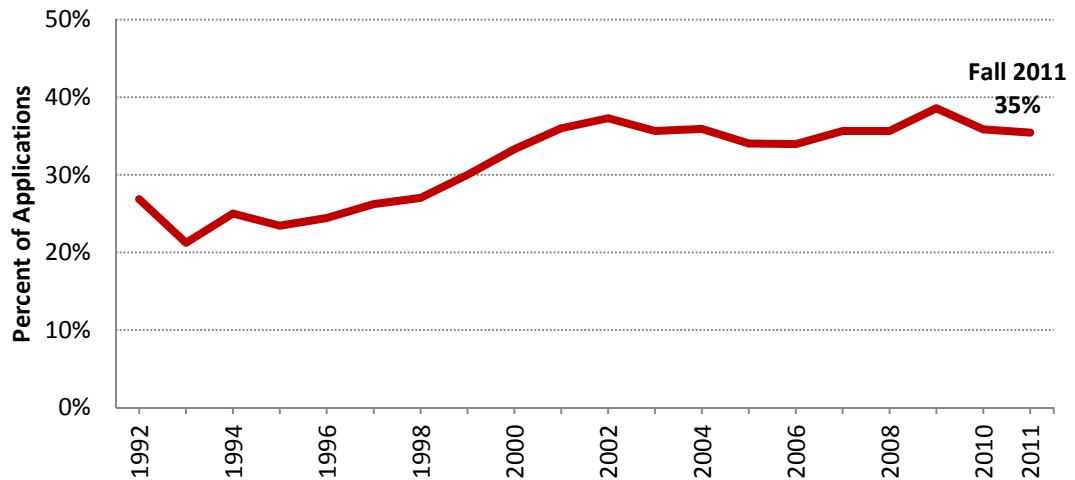
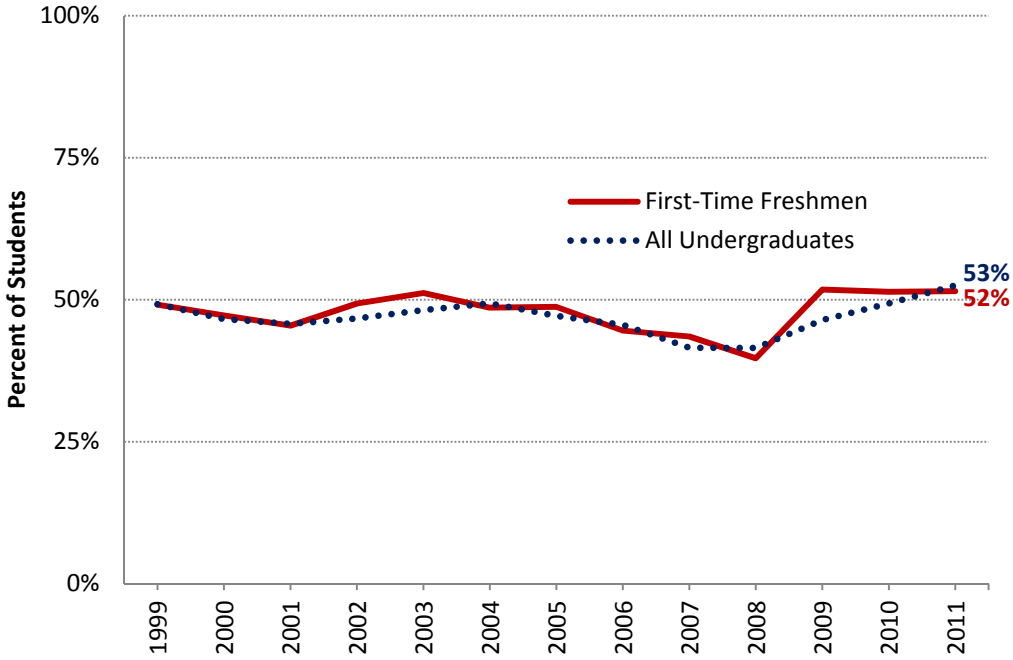


Figure B.7. Percent of First-Time Freshmen and All Undergraduates Awarded Financial Aid, Fall 1999–Fall 2011



### C. External Undergraduate Transfers

#### Observations

- The College of Agriculture & Life Sciences admits the largest number of undergraduate transfers (see Figure C.1)
- The number of new external transfers in the College of Agriculture & Life Sciences has decreased from 261 in Fall 2010 to 252 in Fall 2011 (see Figure C.1)
- Starting Fall 2000, the School of Industrial & Labor Relations admits the highest percentage of transfers among the college’s new admits (see Figure C.2)
- The percentage of new students in the School of Industrial & Labor Relations that are transfers increased from a low of 12.1% in Fall 1992 to 43.1% in Fall 2008 (see Figure C.2)

Figure C.1. Number of Fall Undergraduate External Transfers Fall 1998–Fall 2011, by College

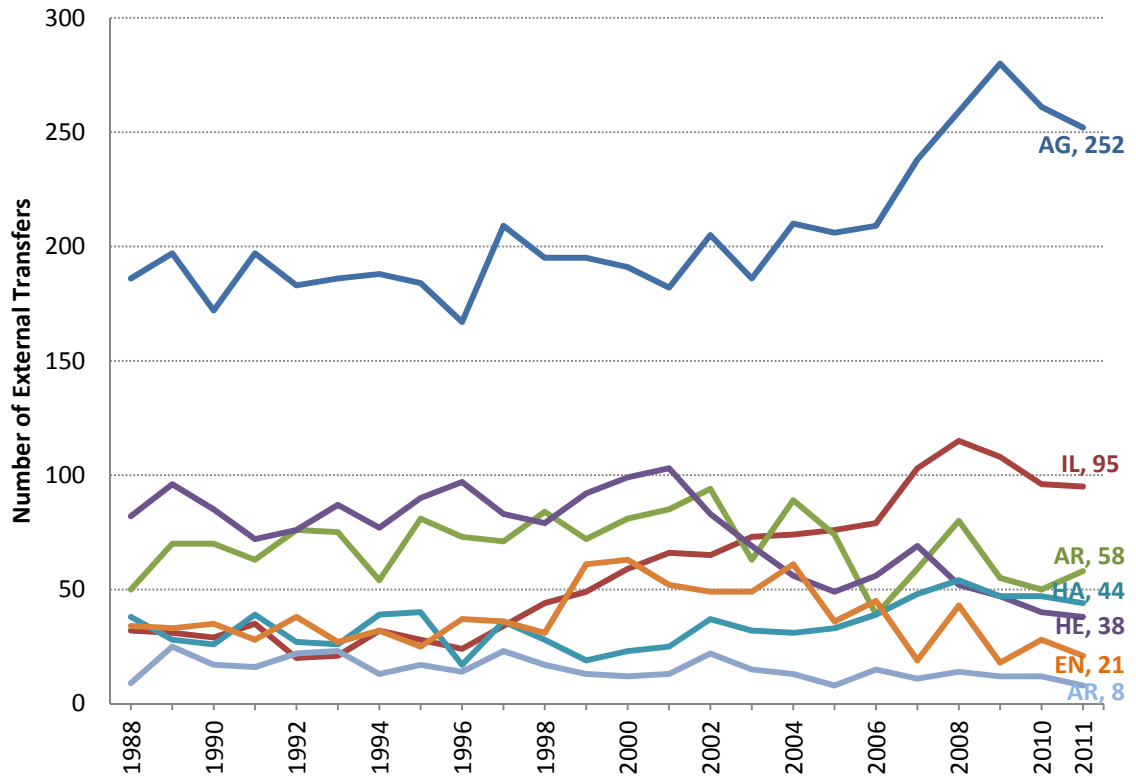
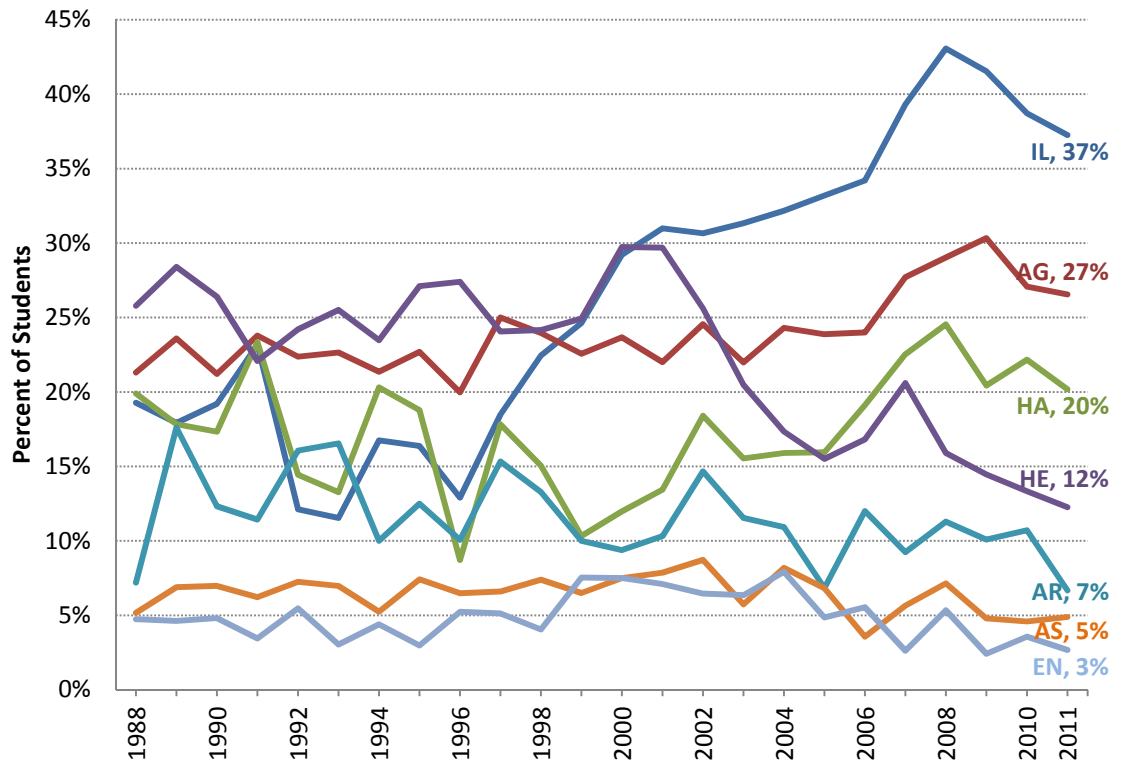


Figure C.2. Percentage of Entering Undergraduates that are External Transfers Fall 1998–Fall 2011, by College



## D. Total Graduate/Professional Enrollment

### Observations

- At 6,964, Fall 2011 Graduate School and the three Professional Schools' enrollment was only 40 students below the Fall 2010 all-time high of 7,004 (see Figure D.1)
- Johnson Graduate School of Management and Veterinary Medicine reached their highest enrollment in Fall 2011 while the Graduate School reached their highest enrollment in Fall 2010 and Law School in Fall 2008 (see Figure D.1):
- Under-represented minority (in this report, URM's are African-American, Hawaiian/Pacific Islander, Hispanic, Native American) enrollment for Fall 2011 is 677, or 9.7% of total graduate/professional enrollment (see Figure D.3).
- Over the last decade, Hispanic enrollment has increased more rapidly than African-American enrollment (see Figure D.4). New federal ethnicity/race guidelines for U.S. citizens and permanent residents implemented Fall 2010 show all students declaring the ethnicity of Hispanic/Latino defaulting to the Hispanic ethnicity regardless of any other race identified. This new guideline increases the Hispanic ethnicity while decreasing the "Mixed URM" race category.
- While total graduate/professional enrollment is 43.7% female, the percentage of women in the graduate/professional student body varies substantially by school (see Figure D.5)

**Figure D.1. Fall Graduate/Professional Schools' Total Enrollment, Fall 1980 – Fall 2011**

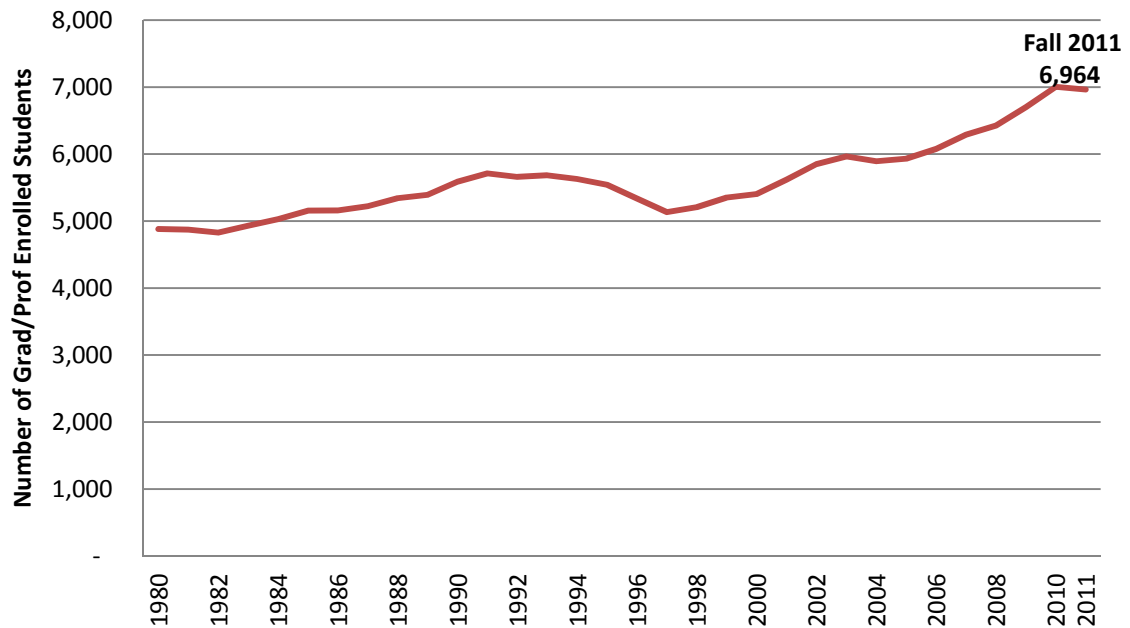
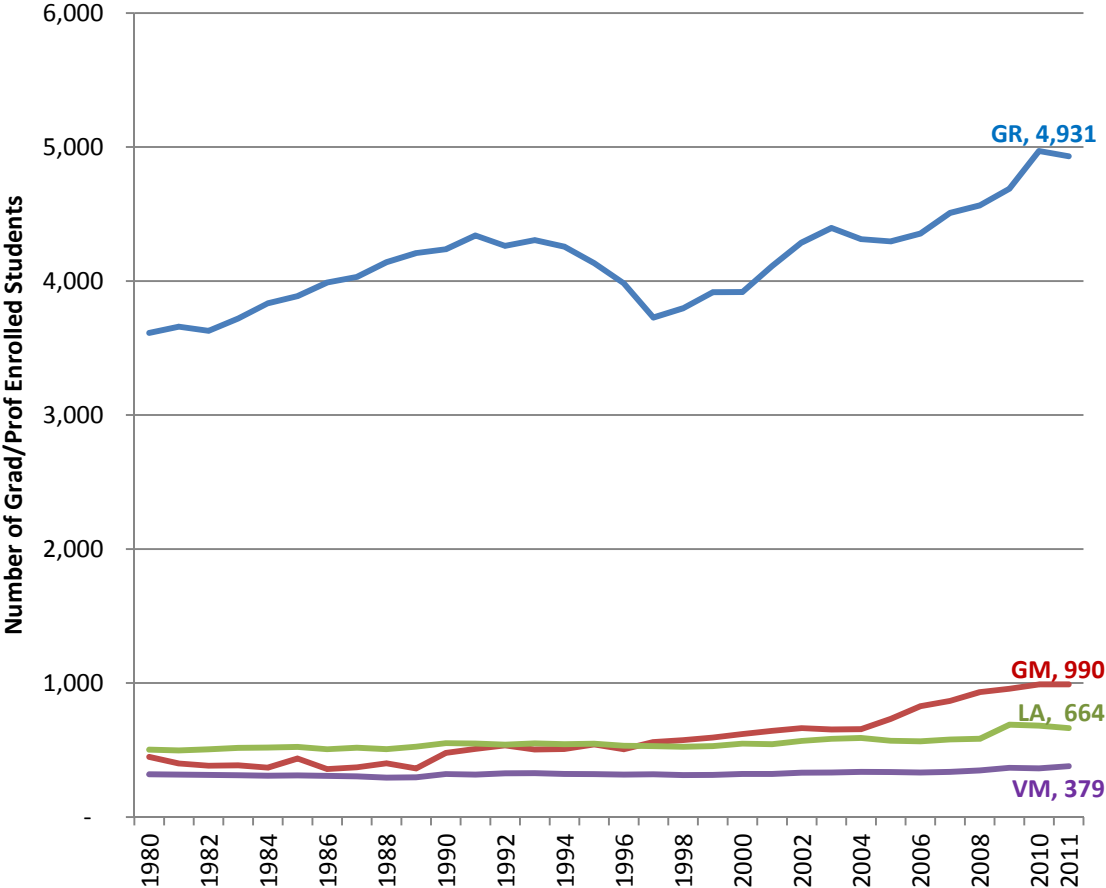
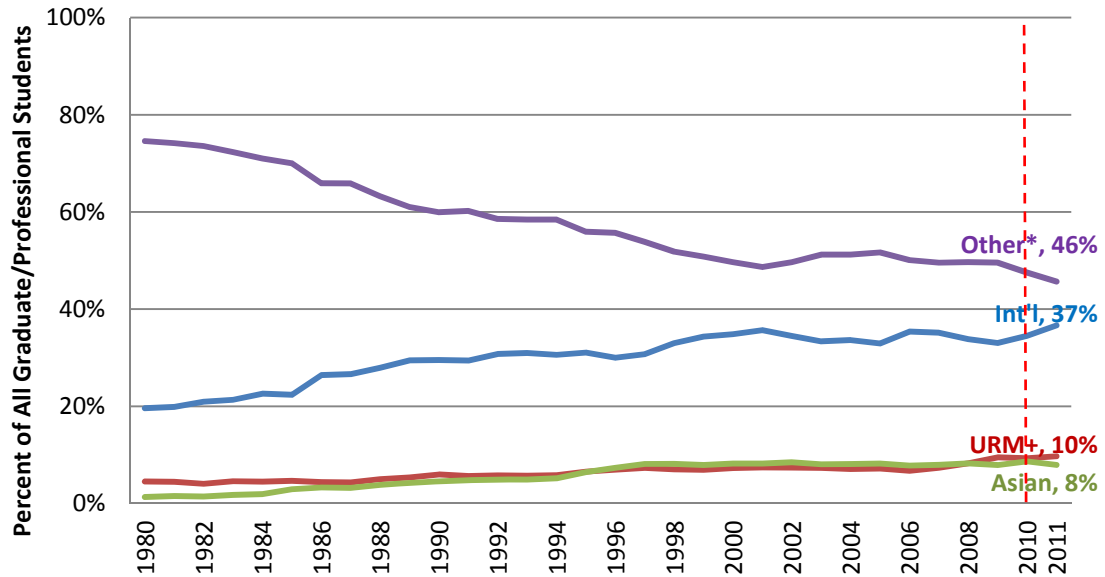


Figure D.2. Graduate/Professional Enrollment, Fall 1980–Fall 2011, by School



**Figure D.3. Percent of Enrolled Graduate/Professional Students by Citizenship/Ethnicity/Race, Fall 1980–Fall 2011**

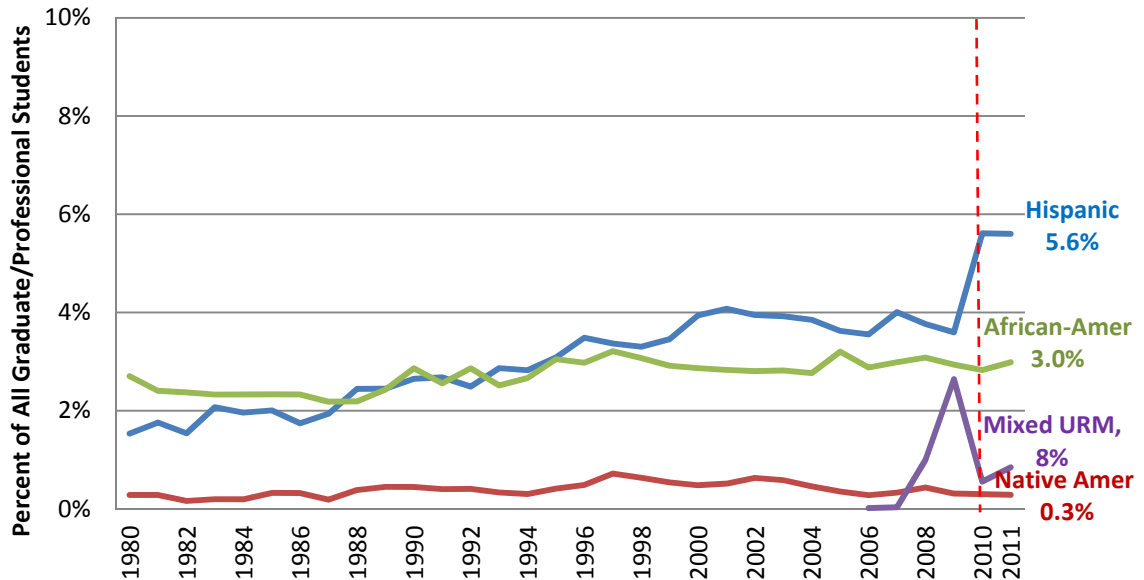


Note: Red dashed line marks adoption of new ethnicity/race collection and reporting practices.

\* Other category includes White, mixed race non-URM, and unknown race [all non-Hispanic].

+ URM category includes African-American, Hispanic, Native American, mixed URM race identities, and starting 2010 Hawaiian/Pacific Islander.

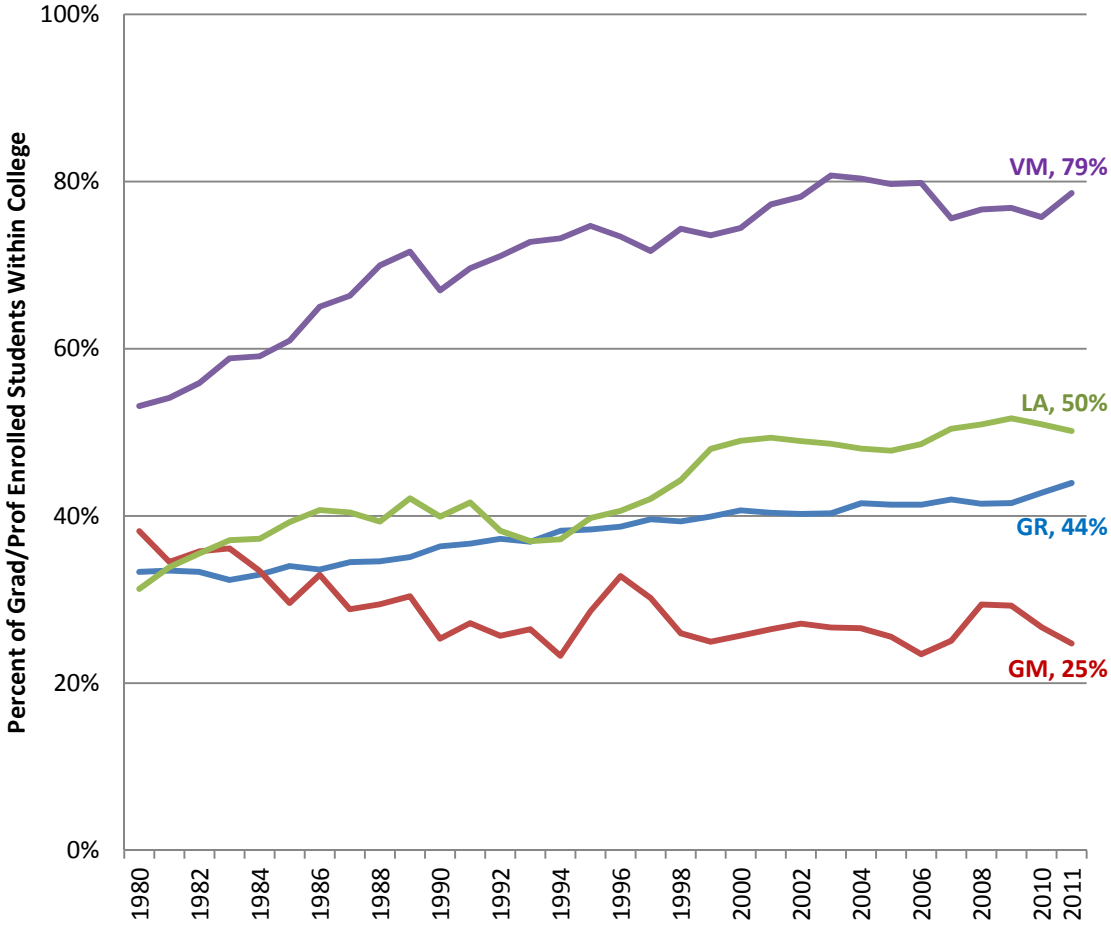
**Figure D.4. Percent of Enrolled Graduate/Professional Students that are Hispanic, African-American, Native American, or Mixed URM, Fall 1980–Fall 2011**



Note: Red dashed line marks adoption of new ethnicity/race collection and reporting practices.

Mixed URM includes Hawaiian/Pacific Islander plus those declaring 2 or more URM categories, excluding Hispanic starting in Fall 2010.

Figure D.5. Percent of Enrolled Graduate/Professional Students that are Women, Fall 1980–Fall 2011, by School





## E. First-Time Post-Baccalaureate Enrollment at Cornell

### Observations

- First-time post-baccalaureate students matriculating at Cornell have increased 347 students since Fall 2006 with the majority of that increase within the Graduate School (Figure E.1).
- The percentage of new post-baccalaureate students that are under-represented minorities (URM) increased from 7.8% in Fall 2010 to 8.7% in Fall 2011 (see Figure E.2)
- New federal ethnicity/race guidelines for U.S. citizens and permanent residents implemented Fall 2010 show all students declaring the ethnicity of Hispanic/Latino defaulting to the Hispanic ethnicity regardless of any other race identified. This new guideline increases the Hispanic ethnicity while decreasing the “Mixed URM” race category (see Figure E.3).
- Women enrollment in the post-baccalaureate programs increased 2.6 percentage points in the Graduate School since Fall 2006 (see Figure E.4).

Figure E.1. First-Time Post-Baccalaureate Enrollment, Fall 2006–Fall 2011

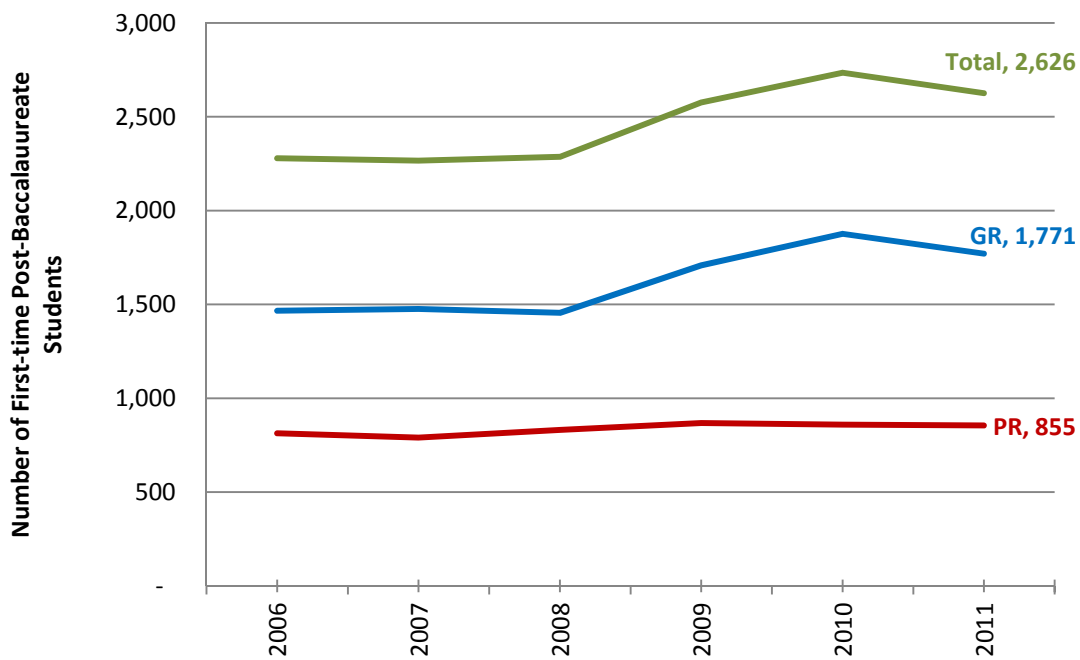
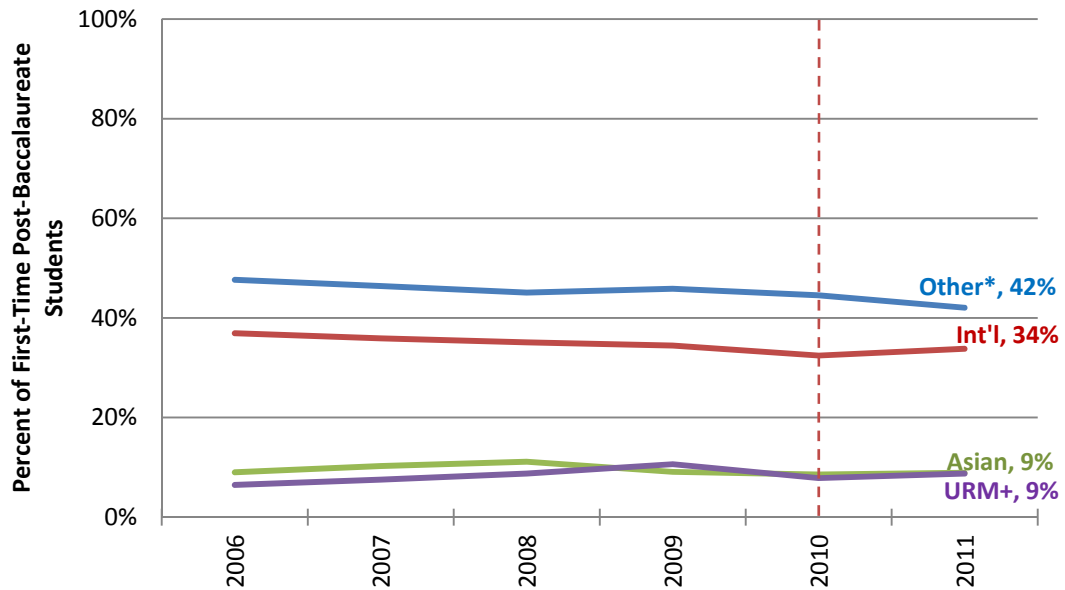
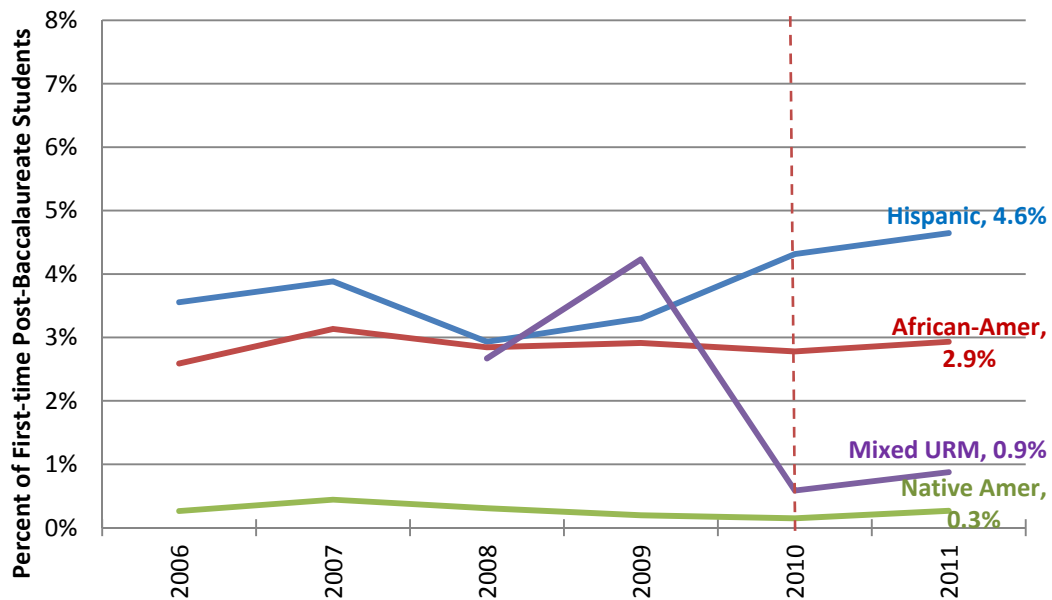


Figure E.2. First-Time Post-Baccalaureate Students by Race/Ethnicity/Citizenship, Fall 2006–Fall 2011



Note: Red dashed line marks adoption of new ethnicity/race collection and reporting practices.  
 \* Other category includes White, mixed race non-URM, and unknown race [all non-Hispanic].  
 † URM category includes African-American, Hispanic, Native American, mixed URM race identities, and starting 2010 Hawaiian/Pacific Islander.

Figure E.3. Percent of First-Time Post-Baccalaureate Students that are Hispanic, African-American, Native American, or Other URM, Fall 2006–Fall 2011



Note: Red dashed line marks adoption of new ethnicity/race collection and reporting practices.  
 Mixed URM includes Hawaiian/Pacific Islander plus those declaring 2 or more URM categories, excluding Hispanic starting in Fall 2010.

Figure E.4. Percent of First-Time Post-Baccalaureate Students that are Women, Fall 2006–Fall 2011

